



# TF 300E T Series

## *Turnable middle-range mast lighting systems*


Teklite TF 300E T lighting system with turnable air-operated telescopic mast, keyed mast sections, internal spiral cable and lamps either 12/24 volt powered by the vehicle battery or 110/230 volt generator powered. The Teklite TF 300E T series of mast lighting systems are especially designed for directional lighting applications. Ideal for fitting to medium size fire vehicles. Teklite TF 300E T series combines high quality lighting performance with reasonable costs.



**MOBILE LIGHTING SYSTEMS**

# Mast specifications

## Technical details



**1** Mast top assembly with 1 x PG9, 1 x PG11, 1 x PG13,5 cable gland and 8 mm top flange fitted to keyed mast sections

**2** Standard natural clear anodised seamless drawn aluminium mast sections with 80mm base tube and swivel rotation handle

**3** 360° turnable cardan mast base with air connection, overpressure/drain valve and rotation brake

**4** Standard pre-mounted and connected warning switch

**5** Rubber protection rings, shock-absorbing

**6** Power supply cable (5 metres) with numbered wires for lamp/beacon connection  
Internal cable : 9 x 1.5 + 4 x 0.75mm<sup>2</sup>

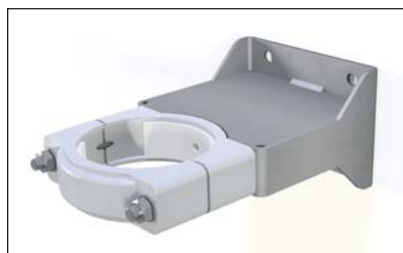
## TF 300E T Series mast models (Class II approved)

Model	Cat. No.	Retracted height	Extended height	Max. headload (120 km/h) Weight / Wind surface	Weight of mast
<b>3 SECTION MASTS</b>					
TF 326E T/3	25486	1225 mm	2630 mm	35 kg / 0,40 m <sup>2</sup>	10,3 kg
TF 330E T/3	25490	1400 mm	3000 mm	35 kg / 0,35 m <sup>2</sup>	11,2 kg
TF 335E T/3	25487	1575 mm	3530 mm	35 kg / 0,30 m <sup>2</sup>	11,8 kg
TF 340E T/3	25488	1730 mm	3930 mm	35 kg / 0,25 m <sup>2</sup>	12,7 kg
TF 350E T/3	25489	2105 mm	4900 mm	35 kg / 0,15 m <sup>2</sup>	14,9 kg
<b>4 SECTION MASTS</b>					
TF 335E T/4	25641	1370 mm	3470 mm	25 kg / 0,25 m <sup>2</sup>	12,1 kg
TF 340E T/4	25642	1495 mm	3970 mm	25 kg / 0,20 m <sup>2</sup>	13,0 kg
TF 347E T/4	25645	1670 mm	4740 mm	25 kg / 0,15 m <sup>2</sup>	13,9 kg
TF 350E T/4	25643	1785 mm	4950 mm	25 kg / 0,15 m <sup>2</sup>	14,4 kg
TF 355E T/4	25644	1910 mm	5450 mm	25 kg / 0,10 m <sup>2</sup>	15,8 kg

## Mast mounting

These mast fittings are available for mounting the mast inside or outside the body of the vehicle.

### External mounting



**Upper Mounting Bracket**

Cat. No. 50326-SG



**Lower Mounting Bracket**

Cat. No. 50553

### Internal mounting



**Roof Bearing**

Cat. No. 25803-SG

# Lamp choice

## Double lamp unit, 2 lamps mounted above the bar \*

Cat. No.	Model	Voltage	Lumen	Weight	Wind surface
26145	2 x 500 Watt Halogen *	230V AC	19.000	5,0 kg	0,08 m <sup>2</sup>
26148	2 x 750 Watt Halogen *	230V AC	33.750	7,9 kg	0,17 m <sup>2</sup>
26150	2 x 1000 Watt Halogen *	230V AC	44.000	7,9 kg	0,17 m <sup>2</sup>
26506	2 x 1500 Watt Halogen *	230V AC	66.000	9,0 kg	0,20 m <sup>2</sup>
52345	2 x 50 Watt LED	12-24V DC	17.000	5,3 kg	0,08 m <sup>2</sup>
52615-3	2 x 50 Watt LED	110-230V AC	17.000	6,8 kg	0,08 m <sup>2</sup>
52673-3	2 x 100 Watt LED	24V DC	25.000	5,5 kg	0,06 m <sup>2</sup>
52647-3	2 x 100 Watt LED	24V DC	42.000	8,3 kg	0,14 m <sup>2</sup>
51971-3	2 x 100 Watt LED	110-230V AC	42.000	10,4 kg	0,14 m <sup>2</sup>

Model 2 x 50 Watt LED\* (52345-B)



## Double lamp unit, 2 lamps mounted below the bar \*

Cat. No.	Model	Voltage	Lumen	Weight	Wind surface
26215	2 x 500 Watt Halogen *	230V AC	19.000	5,0 kg	0,08 m <sup>2</sup>
26218	2 x 750 Watt Halogen *	230V AC	33.750	7,9 kg	0,17 m <sup>2</sup>
26220	2 x 1000 Watt Halogen *	230V AC	44.000	7,9 kg	0,17 m <sup>2</sup>
26224	2 x 1500 Watt Halogen *	230V AC	66.000	9,0 kg	0,20 m <sup>2</sup>
52028	2 x 50 Watt LED	12-24V DC	17.000	5,3 kg	0,08 m <sup>2</sup>
52328	2 x 50 Watt LED	110-230V AC	17.000	6,8 kg	0,08 m <sup>2</sup>
52674-3	2 x 100 Watt LED	24V DC	25.000	5,5 kg	0,06 m <sup>2</sup>
52346-3	2 x 100 Watt LED	24V DC	42.000	8,3 kg	0,14 m <sup>2</sup>
52648-3	2 x 100 Watt LED	110-230V AC	42.000	10,4 kg	0,14 m <sup>2</sup>

Model 2 x 1000 Watt Halogen\*\* (26220)



## Triple lamp unit, 1 lamp mounted above and 2 lamps below the bar

Cat. No.	Model	Voltage	Lumen	Weight	Wind surface
26285	3 x 500 Watt Halogen *	230V AC	28.500	6,4 kg	0,11 m <sup>2</sup>
52616-3	3 x 50 Watt LED	12-24V DC	25.500	7,0 kg	0,11 m <sup>2</sup>
52617-3	3 x 50 Watt LED	110-230V AC	25.500	9,1 kg	0,11 m <sup>2</sup>
52675-3	3 x 100 Watt LED	24V DC	37.500	7,1 kg	0,08 m <sup>2</sup>
52649-3	3 x 100 Watt LED	24V DC	63.000	11,3 kg	0,20 m <sup>2</sup>
52650-3	3 x 100 Watt LED	110-230V AC	63.000	14,5 kg	0,20 m <sup>2</sup>

Model 3 x 100 Watt LED (52675-3)



## Triple lamp unit, 3 lamps mounted above the bar

Cat. No.	Model	Voltage	Lumen	Weight	Wind surface
26350	3 x 500 Watt Halogen *	230V AC	28.500	6,6 kg	0,12 m <sup>2</sup>
52169	3 x 50 Watt LED	12-24V DC	25.500	7,2 kg	0,12 m <sup>2</sup>
52620-3	3 x 50 Watt LED	110-230V AC	25.500	9,4 kg	0,12 m <sup>2</sup>
52676-3	3 x 100 Watt LED	24V DC	37.500	7,3 kg	0,08 m <sup>2</sup>

Model 4 x 100 Watt LED\* (52609-3)



## Quadruple lamp unit, 2 lamps mounted above and 2 lamps below the bar \*

Cat. No.	Model	Voltage	Lumen	Weight	Wind surface
26410	4 x 500 Watt Halogen *	230V AC	38.000	7,9 kg	0,14 m <sup>2</sup>
52623-3	4 x 30 Watt LED	12-24V DC	12.800	3,7 kg	0,07 m <sup>2</sup>
52624-3	4 x 45 Watt LED	12-24V DC	19.200	3,7 kg	0,07 m <sup>2</sup>
26392	4 x 50 Watt LED	12-24V DC	26.800	7,3 kg	0,07 m <sup>2</sup>
52653-3	4 x 50 Watt LED	12-24V DC	34.000	8,6 kg	0,14 m <sup>2</sup>
52654-3	4 x 50 Watt LED	110-230V AC	34.000	11,5 kg	0,14 m <sup>2</sup>
52677-3	4 x 100 Watt LED	24V DC	50.000	8,9 kg	0,10 m <sup>2</sup>
52655-3	4 x 100 Watt LED	24V DC	84.000	14,3 kg	0,25 m <sup>2</sup>
52609-3	4 x 100 Watt LED	110-230V AC	84.000	19,0 kg	0,25 m <sup>2</sup>

Model 5 x 500 Watt Halogen\* (26430)



## Quintuple lamp unit, 3 lamps mounted above and 2 lamps below the bar

Cat. No.	Model	Voltage	Lumen	Weight	Wind surface
26430	5 x 500 Watt Halogen *	230V AC	47.500	9,3 kg	0,17 m <sup>2</sup>
52656-3	5 x 50 Watt LED	12-24V DC	42.500	10,4 kg	0,17 m <sup>2</sup>
52657-3	5 x 50 Watt LED	110-230V AC	42.500	14,0 kg	0,17 m <sup>2</sup>
52678-3	5 x 100 Watt LED	24V DC	62.500	10,6 kg	0,12 m <sup>2</sup>

Other lamp units available on request.

\* Lamp unit available with beacon & bracket (option).

Put a "B" after the lamp unit cat. no. for ordering purposes.

\* Lamp unit available with lamp protection guard (option).

Put a "P" after the lamp unit cat. no. for ordering purposes. Also available in 110V AC version.

# Air supply for mast extension

The air pressure for mast extension may be provided by a battery powered compressor, the vehicle air pressure system or even a handpump.

## Using the vehicle battery power



### “TekAir” Compressor Model 40/50

#### IMPORTANT NOTE :

All our compressors are supplied with a NO (normal open) valve. They need permanent current during operation of the mast lighting system. However, when there are applications where there is no permanent current available (e.g. mast fitted to a standalone container), apply for a compressor with a NC valve.

#### Models with NO Valve

“TekAir” Compressor Model 40/50, 12 volt	Cat. No. 33640
“TekAir” Compressor Model 40/50, 24 volt	Cat. No. 33642

#### Models with NO Valve and Deadman Function

“TekAir” Compressor Model 40/50, 12 volt	Cat. No. 33641
“TekAir” Compressor Model 40/50, 24 volt	Cat. No. 33643



### Remote Control for “TekAir” Compressor Model 40/50

The complete remote control set is delivered with 5 metre cable and connection plug.

#### Models

Model 12 volt	Cat. No. 25798
Model 24 volt	Cat. No. 25799

#### Models with Deadman Function

Model 12 volt	Cat. No. 25220
Model 24 volt	Cat. No. 25221

Note : For more air supply options see the TekAir leaflet.

## Using the vehicle air pressure system



### Air Pressure Control Unit

Combined unit consisting of manometer, pressure regulator and control handle.

#### Models

AP Control Unit	Cat. No. 25218
AP Control Unit with Deadman Function	Cat. No. 25219

## Using a handpump



### Handpump

Cat. No. 9256-SS



### Pump Wall Mounting Bracket Set

Cat. No. 25591-SS

For mounting the handpump to the wall or vehicle body.

<b>Air Hose 8mm</b> (not shown)	Cat. No. B9189
<b>Hose Clip</b> (not shown)	Cat. No. B9190



All details given in this publication are approximate and may be subject to change without notice.

Distributor :

**TEKSAM COMPANY NV**, Woudstraat 21, 3600 Genk, Belgium

Tel : +32 (0)89 38 44 72 Fax : +32 (0)89 38 61 41 E-mail : info@teksamco.com Website : www.teklite.com

TEKLITE is a division of Teksam Company NV

ISO 9001 CE

**MOBILE LIGHTING SYSTEMS**