



TF 300E NT Series

Non-turnable middle-range mast lighting systems



Teklite TF 300E NT lighting system with non-turnable air-operated telescopic mast, keyed mast sections, internal spiral cable and lamps either 12/24 volt powered by the vehicle battery or 110/230 volt generator powered.

The Teklite TF 300E NT serie of mast lighting systems are especially designed for 360° all-round lighting applications.

Ideal for fitting to medium size fire vehicles Teklite TF 300E NT series combines high quality lighting performance with reasonable costs.



MOBILE LIGHTING SYSTEMS

Mast specifications

Technical details

1 Mast top assembly with 1 x PG9, 1 x PG11, 1 x PG13,5 cable gland and 8 mm top flange fitted to keyed mast sections

2 Standard natural clear anodised seamless drawn aluminium mast sections with 80 mm base tube

3 Fixed cardan mast base with air connection and overpressure/drain valve

4 Standard pre-mounted and connected warning switch

5 Rubber protection rings, shock-absorbing

6 Power supply cable (5 metres) with numbered wires for lamp/beacon connection
Internal cable : 9 x 1.5 + 4 x 0.75mm²

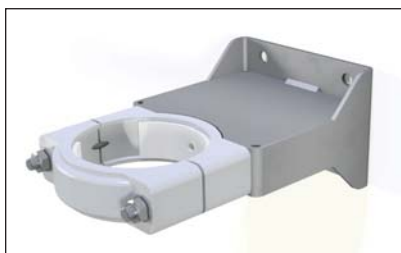
TF 300E NT Series mast models (Class II approved)

Model	Cat. No.	Retracted height	Extended height	Max. headload (120 km/h) Weight / Wind surface	Weight of mast
3 SECTION MASTS					
TF 326E NT/3	25480	1225 mm	2630 mm	35 kg / 0,40 m ²	9,9 kg
TF 330E NT/3	25484	1400 mm	3000 mm	35 kg / 0,35 m ²	10,8 kg
TF 335E NT/3	25481	1575 mm	3530 mm	35 kg / 0,30 m ²	11,4 kg
TF 340E NT/3	25482	1730 mm	3930 mm	35 kg / 0,25 m ²	12,3 kg
TF 350E NT/3	25483	2105 mm	4900 mm	35 kg / 0,15 m ²	14,5 kg
4 SECTION MASTS					
TF 335E NT/4	25631	1370 mm	3470 mm	25 kg / 0,25 m ²	11,7 kg
TF 340E NT/4	25632	1495 mm	3970 mm	25 kg / 0,20 m ²	12,5 kg
TF 347E NT/4	25635	1670 mm	4740 mm	25 kg / 0,15 m ²	13,4 kg
TF 350E NT/4	25633	1785 mm	4950 mm	25 kg / 0,15 m ²	13,9 kg
TF 355E NT/4	25634	1910 mm	5450 mm	25 kg / 0,10 m ²	15,3 kg

Mast mounting

These mast fittings are available for mounting the mast inside or outside the body of the vehicle.

External mounting



Upper Mounting Bracket

Cat. No. 50326-SG



Lower Mounting Bracket

Cat. No. 50553

Internal mounting



Roof Bearing

Cat. No. 27622-SG

Lamp choice

All-round lamp unit, 3 lamps mounted above plate *

Cat. No.	Model	Voltage	Lumen	Weight	Wind surface
26950	3 x 500 Watt Halogen *	230V AC	28.500	6,1 kg	0,10 m ²
50451	3 x 50 Watt LED	12-24V DC	20.100	5,8 kg	0,06 m ²
52309-3	3 x 50 Watt LED	12-24V DC	25.500	6,7 kg	0,07 m ²
52590-3	3 x 50 Watt LED	110-230V AC	25.500	8,9 kg	0,07 m ²
52679-3	3 x 100 Watt LED	24V DC	37.500	7,0 kg	0,07 m ²



All-round lamp unit, 3 lamps mounted below plate *

Cat. No.	Model	Voltage	Lumen	Weight	Wind surface
27040-3	3 x 500 Watt Halogen *	230V AC	28.500	9,0 kg	0,11 m ²
50453-3	3 x 50 Watt LED	12-24V DC	20.100	9,6 kg	0,07 m ²
52593-3	3 x 50 Watt LED	12-24V DC	25.500	9,7 kg	0,09 m ²
52594-3	3 x 50 Watt LED	110-230V AC	25.500	11,8 kg	0,09 m ²
52680-3	3 x 100 Watt LED	24V DC	37.500	9,8 kg	0,07 m ²
52658-3	3 x 100 Watt LED	24V DC	63.000	13,9 kg	0,12 m ²
52659-3	3 x 100 Watt LED	110-230V AC	63.000	17,0 kg	0,12 m ²



All-round lamp unit, 4 lamps mounted above plate *

Cat. No.	Model	Voltage	Lumen	Weight	Wind surface
37135	4 x 500 Watt Halogen *	230V AC	38.000	7,5 kg	0,09 m ²
27140-3	4 x 1000 Watt Halogen *	230V AC	88.000	13,3 kg	0,13 m ²
50259	4 x 50 Watt LED	12-24V DC	26.800	7,3 kg	0,06 m ²
52597-3	4 x 50 Watt LED	12-24V DC	34.000	8,5 kg	0,06 m ²
52598-3	4 x 50 Watt LED	110-230V AC	34.000	11,4 kg	0,06 m ²
52681-3	4 x 100 Watt LED	24V DC	50.000	8,9 kg	0,06 m ²



All-round lamp unit, 4 lamps mounted below plate *

Cat. No.	Model	Voltage	Lumen	Weight	Wind surface
27235-3	4 x 500 Watt Halogen *	230V AC	38.000	10,6 kg	0,10 m ²
27206-3	4 x 50 Watt LED	12-24V DC	26.800	11,6 kg	0,05 m ²
52601-3	4 x 50 Watt LED	12-24V DC	34.000	11,6 kg	0,07 m ²
52602-3	4 x 50 Watt LED	110-230V AC	34.000	14,5 kg	0,07 m ²
52682-3	4 x 100 Watt LED	24V DC	50.000	11,8 kg	0,05 m ²
52195-3	4 x 100 Watt LED	24V DC	84.000	17,2 kg	0,11 m ²
52359-3	4 x 100 Watt LED	110-230V AC	84.000	21,5 kg	0,11 m ²



All-round lamp unit, 6 lamps mounted above plate

Cat. No.	Model	Voltage	Lumen	Weight	Wind surface
52588-3	6 x 30 Watt LED	12-24V DC	19.200	4,4 kg	0,05 m ²
52589-3	6 x 45 Watt LED	12-24V DC	28.800	4,4 kg	0,05 m ²
52651-3	6 x 50 Watt LED	12-24V DC	40.200	9,6 kg	0,06 m ²
52990-3	6 x 50 Watt LED	12-24V DC	51.000	13,2 kg	0,08 m ²
52991-3	6 x 50 Watt LED	110-230V AC	51.000	17,5 kg	0,08 m ²



All-round lamp unit, 6 lamps mounted below plate *

Cat. No.	Model	Voltage	Lumen	Weight	Wind surface
52591-3	6 x 30 Watt LED	12-24V DC	19.200	7,7 kg	0,05 m ²
52592-3	6 x 45 Watt LED	12-24V DC	28.800	7,7 kg	0,05 m ²
50399-3	6 x 50 Watt LED	12-24V DC	40.200	13,3 kg	0,07 m ²

Other lamp units available on request.

* Lamp unit available with beacon & bracket (option). Put a "B" after the lamp unit cat. no. for ordering purposes.

* Lamp unit available with lamp protection guard (option). Put a "P" after the lamp unit cat. no. for ordering purposes. Also available in 110V AC version.

Air supply for mast extension

The air pressure for mast extension may be provided by a battery powered compressor, the vehicle air pressure system or even a handpump.

Using the vehicle battery power



“TekAir” Compressor Model 40/50

IMPORTANT NOTE :

All our compressors are supplied with a NO (normal open) valve. They need permanent current during operation of the mast lighting system. However, when there are applications where there is no permanent current available (e.g. mast fitted to a standalone container), apply for a compressor with a NC valve.

Models with NO Valve

“TekAir” Compressor Model 40/50, 12 volt	Cat. No. 33640
“TekAir” Compressor Model 40/50, 24 volt	Cat. No. 33642

Models with NO Valve and Deadman Function

“TekAir” Compressor Model 40/50, 12 volt	Cat. No. 33641
“TekAir” Compressor Model 40/50, 24 volt	Cat. No. 33643



Remote Control for “TekAir” Compressor Model 40/50

The complete remote control set is delivered with 5 metre cable and connection plug.

Models

Model 12 volt	Cat. No. 25798
Model 24 volt	Cat. No. 25799

Models with Deadman Function

Model 12 volt	Cat. No. 25220
Model 24 volt	Cat. No. 25221

Note : For more air supply options see the TekAir leaflet.

Using the vehicle air pressure system



Air Pressure Control Unit

Combined unit consisting of manometer, pressure regulator and control handle.

Models

AP Control Unit	Cat. No. 25218
AP Control Unit with Deadman Function	Cat. No. 25219

Using a handpump



Handpump

Cat. No. 9256-SS



Twin Clamp Ø80

Cat. No. 34115

For mounting the handpump to the mast.



Pump Wall Mounting Bracket Set

Cat. No. 25591-SS

For mounting the handpump to the wall or vehicle body.

Air Hose 8mm (not shown) Cat. No. B9189

Hose Clip (not shown) Cat. No. B9190



All details given in this publication are approximate and may be subject to change without notice.

Distributor :

TEKSAM COMPANY NV, Woudstraat 21, 3600 Genk, Belgium

Tel : +32 (0)89 38 44 72 Fax : +32 (0)89 38 61 41 E-mail : info@teksamco.com Website : www.teklite.com

TEKLITE is a division of Teksam Company NV

ISO 9001 CE

MOBILE LIGHTING SYSTEMS